

WASHINGTON COUNTY  
**Wildlife**  
**Society**

1305 E. Blue Bell Rd., Brenham, Texas 77833  
Telephone 979-277-6212 Fax 979-277-6223  
www.wcwildlife.org



**NEWSLETTER**

**Winter 2007**

**OFFICERS:**

Billie Eckert, Society President, (979) 836-5904  
Roland Contreras, Society Vice President, (979) 830-9006  
David Gresham, Society Treasurer, (713) 906-0197  
Richard Thames, Society Secretary, (979) 278-3053

**WMA DIRECTORS:**

**Greenvine WMA**

Sara Byman, Director, (979) 830-8555,  
melodyhillranch@earthlink.net  
Billie Eckert, Vice-Director, (979) 836-5904

**Sun Oil Field WMA**

Gil Janner, Director, (979) 251-7134

**Rocky Creek WMA**

Ronald Perry, Director, (979) 289-2234 (home),  
(979) 732-5002 (cell)  
Bill Kenisell, Vice-Director, (713) 446-2142,  
wkinisell@hotmail.com

**Post Oak WMA**

Clay Theeck, Director, (979) 830-0427,  
Bill Thane, Vice-Director, (979) 836-6764,

**Sandtown WMA**

Val Hinze, Director, (979) 278-3120,  
zinh@industryinet.com  
Jennifer Mohr, Vice-Director, (979)278-3394,  
mohr@industryinet.com

**Mt. Vernon WMA**

Greg Schomburg, Director, (979) 836-2568

**New Years Creek WMA**

Dave Redden, Director, (936) 878-1988,  
dredden@tconline.net  
Monterey White, Vice-Director, (281) 326-1352,  
whiteoakfarm@att.net

**RESOURCE CONTACTS:**

Larry Pierce, County Extension Agent-Agriculture/Natural  
Resources, (979) 277-6212, lpierce@ag.tamu.edu  
Robert Lehmann, Texas Parks and Wildlife Department –  
Environmental Specialist, (979) 277-6297,  
robertl@alpha1.net

**WCWS Office Secretary**

Ann Thames, (979) 278-3053 (H), (979) 203-3455 (cell),  
semahta@yahoo.com

**WCWS Annual Meeting**

January 19, 2007

6:00 p.m. social / 7:00 p.m. Stew Dinner

Washington County Fairgrounds Special Events Center  
Featured Speaker: **Don Steinbach** on Past, Present and  
Future of Wildlife in Washington County

***President's Remarks***

2006 has flown by! I want to thank y'all for your active participation in your local co-ops. Your continued involvement helps us with the future direction of your Society. I'd like to give special thanks to our advisors, Robert Lehmann, Texas Parks & Wildlife, and Larry Pierce, Cooperative Extension Agent for their expert guidance and to our volunteer board members for their assistance in bringing programs and resources to you. It takes many volunteer hours to bring to you these wildlife programs and we're always in need of fresh ideas. Check out the **Get Involved....Volunteer** section of this newsletter. It is through your participation that we are able to continue to serve as your educational source on wildlife and habitat management through field days, speakers and programs, special events and general membership meetings.

Please come join us on Friday, January 19<sup>th</sup> for an informative talk by Don Steinbach, Professor Emeritus, Texas A&M University and retired from the Wildlife and Fisheries Department. Mr. Steinbach's presence is well known in and around the Washington County area where he has assisted in the development of wildlife management. His past experience in trends of ownership, land size and land value along with his insight to the direction we are heading should not be missed.

Grab your family, neighbors and friends and come join us for the Annual Stew Dinner meeting. There is no charge for this event, however it is a good time to renew your \$15 annual membership dues. Please bring your favorite dessert and share it with other members.

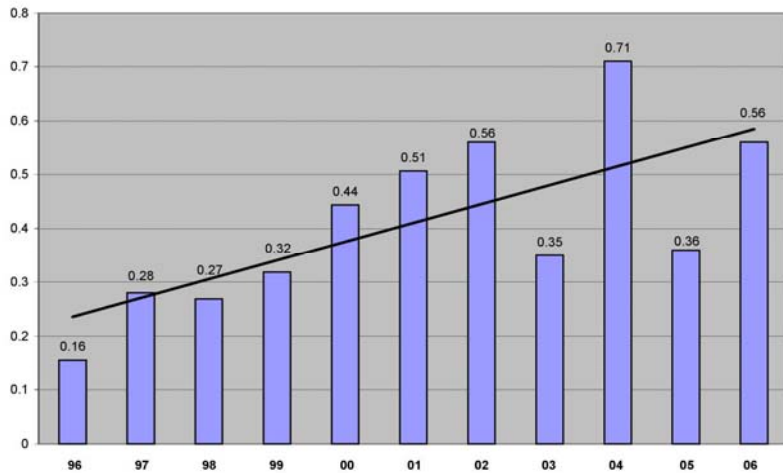
*Billie Eckert*  
President

# Washington County Deer Report

By Robert Lehmann, Texas Parks & Wildlife

Thanks to all who turned in their “yellow sheet” deer sighting report. A total of 2426 identified deer were turned in by the WCWS members this year. 1313 doe were reported with 736 fawns which relates to a 56% fawn crop this year. A total of 377 bucks were reported to bring our buck /doe ratio to 1 buck for every 3.5 does. This year continues to look real good for the deer population. Healthy fawn crops and sound buck doe ratios are the key to maintaining our deer herd in the county.

**Washington County Percent Fawns  
All WMA's Combined 1996-2006**



The 06/07 deer season in Washington County was another exciting year for some lucky hunters. Some very impressive deer were taken by hunters throughout the county. One of the largest reported deer came from the west-end of the county supporting 12 scoreable points and a B&C gross score of 155 and 4/8. Another very impressive deer came from the Burton area scoring a little over 143 B&C. Several deer from the county scored near the 130's and quite a few checked in were in the 120's, but most importantly all these deer were able to reach 3-5 years in age. Since the implementation of the antler restriction in 2002 the majority of the 1.5 and 2.5 age class of bucks has been protected under this rule. Hunters have had the opportunity to see the potential of growing large antlered bucks in the county while also increasing the number of bucks in the herd.

Things are looking very good for the deer population in the county, but we should not forget to provide good habitat for the deer we have. It is most important to provide adequate nutrition and cover for our deer to live and raise their young. Prepare to provide some tall grass fawning areas for the fawns that will be hitting the ground in the spring.

## 2006 Shooting and Firearm Safety Event

The Washington County Wildlife Society and the Texas Parks and Wildlife hosted a youth shooting and safety event on Wednesday, October 25<sup>th</sup> at Nails Creek State Park. 40 plus students involved in wildlife and agriculture classes from Brenham and Burton high schools attended this fun, safe, hands-on educational opportunity. The objective of the event was to educate students about hunter ethics and safety. Each student received one-on-one instructions on: hunter and boater safety, hunter ethics, archery, shotgun, 22 pistols, 22 rifles, black powder rifle, and center-fire rifle. A noon meal provided and prepared by volunteers of the Washington County Wildlife Society and student instructions were provided by TPWD Wildlife Biologist, Game Wardens, Corp of Engineer Rangers and the Washington County Peace Officers Association.



## Feed our Feathered Friends

By Roland Contreras, Vice President

Although many bird lovers place some type of bird feeder during the fall and winter months, we should not forget our berry loving friends. There are a variety of berry eating birds such as the northern cardinal, chickadees, woodpeckers, finches, nuthatches, titmice and waxwings that would not survive the winter months if there were not sufficient berry like fruit to eat. The best selection of fruit bearing plants or shrubs are your native type. Make certain that the species you intend to feed will thrive in the climate and soil conditions in your area. Also don't forget to feed our loved bluebirds and robins who love fruits like blueberries, raspberries, raisins, and chopped apples or orange halves.

You may check with your local nursery or county extension office for a native variety plant suitable for your area. Here is a list of some berry producing plants that are most common and easy to grow and maintain: Crabapple zones 3-8, Mulberry zone 4-8, Southern Waxmyrtle zones 7-9, Sweetbay zones 5-9, Spicebush zones 4-9, Winterberry zones 3-9, Virginia creeper zones 3-9 and Washington hawthorn zones 3-8. To



check with the Plant Hardiness Zone map in your area go to [www.birdsandblooms.com](http://www.birdsandblooms.com) for more information. So let's keep our feathered friends happy this winter and begin preparing a food pantry for their survival.

### Bird Butter with Natural Ingredients

Compliments of Lysle Mockler

Texas Bluebird Society Board Member, Waxahachie

1 cup chunky peanut butter  
1 cup lard  
4 cups whole grain corn meal (May be stone ground)  
1 cup whole wheat flour

The following "extra" additions are nice and may vary depending on what is available in your area.

1 cup peanut hearts  
1 cup sunflower chips  
1 cup currants

This recipe for Bird Butter can be mixed and formed into "potatoes" or flattened into squares - whatever works for your feeder. Wrap in individual chunks and keep in the freezer until needed. *Happy Birding!*

---

## Get Involved . . . Volunteer

### Volunteer Opportunities

If you would like to help out, donating your time and in-kind services can involve activities such as the following:

#### Budget & Finance Committee

- Preferred experience in non-profit corporations or privately held business. Serve as advisory to the Executive Committee and assist in the development of budgets. Review and advise all requests for educational and scholarship funds.

#### Newsletter & Website Committee

- Looking for members with creative flair to assist in writing copy for mailings, newsletters, etc. Some experience in writing and willing to donate a couple of hours a month to a good cause.

#### Membership Committee

- Publicize the Society by such means as advertisements or announcements in appropriate media, prepare and distribute documents describing the activities of the Society to appropriate individuals or professional organizations, etc. Responsible for recruitment of new members and retention of active members. Propose policies and procedures to the Executive Committee which could be expected to enhance membership in the Society.

#### Activities and Events Committee

- Activities include those events that require normal advance planning. Some examples include educational programs, field trips, result demonstrations, certification trainings, annual meetings and fund raising events.

For more information or to become a Washington County Wildlife Society volunteer, please email: [secretary@wcwildlife.org](mailto:secretary@wcwildlife.org) or contact the Extension Office at 979-277-6212.

## Upcoming Events:

### January 13 — 2007 Prescribed Burning Workshop

Washington County Wildlife Society will sponsor a prescribed burning workshop Saturday, Jan. 13<sup>th</sup> at the Long Star Ranch located at 5722 Longpoint Rd. about 1 mile North of FM 390. The workshop will begin at 8:30 am and is designed to give landowners and managers a basic understanding of the use and application of prescribed fire in a wildlife and grazing management program.

Topics will include planning the burn, fire weather and safety, the role of fire in vegetation management, fire line preparation, suppression equipment and smoke management. Participants will receive instructions on properly conducting a burn and then have the opportunity on to participate in a controlled burn weather permitting.



Snacks and refreshments will be provided but participants will need to bring a sack lunch. Please plan to attend this informative and educational program to help you understand the safe and controlled use of fire to enhance wildlife habitat.

The equipment used to help put on this workshop was purchased through a grant from the National Wild Turkey Federation and will be made available to landowners interested in doing controlled burns on their property.

### February 16–19, 2007 — Tenth annual Great Backyard Bird Count (GBBC)



Sponsored by the Cornell Lab of Ornithology and National Audubon Society, this event will give everyone a chance to discover the birds in their neighborhood and "Count for the Record."

People of all ages, from beginners to experts, are invited to join this event which spans all of the United States and Canada. Participants can take part wherever they are – at home, in schoolyards, at local parks or wildlife refuges. Observers simply count the highest number of each species they see during an outing or a sitting, and enter their tally on the Great Backyard Bird Count web site at: [www.birdsource.org/gbbc](http://www.birdsource.org/gbbc).