





# Washington County Co-op 2010 Deer Report

By Stephanie Damron, Texas Parks & Wildlife

A big thanks goes out to all of the individuals who spent time recording their incidental sightings for deer in Washington County. The 2010 data set shows that co-op members identified and recorded a total of 4,235 deer resulting in 929 bucks, 2,096 does, and 1,210 fawns. This calculates to an amazing 1 buck per 2.2 does and a county average of 58% fawn survival rate. The 58% fawn survival rate is up 26% from last year's low of 32% fawn survival rate. As seen in CHART 1 the fawn survival rate continues to stay on an upward trend. Rocky Creek WMA reported the highest rate within the county with 69% of their fawns surviving this year. SEE CHART 2

The results of this survey demonstrate that the efforts of co-op members and others are having a positive impact on the deer herd. There is a direct correlation between high fawn survival

rates and the deer population increasing within the county. Without replacement fawns a deer population will not increase. It is very important to provide adequate fawning cover and proper nutrition during the fawning period to keep the fawn survival rates up.

I want to say a special thanks to the members who sent in daytime sightings, this valuable data can reflect the overall health of the herd and assist in making recommendations to benefit the deer population within the county.

Keep up the good work and feel free to call if you have any questions:

Stephanie Damron  
Texas Parks and Wildlife Department  
(979) 277-6297, stephanie.damron@tpwd.state.tx.us

Chart 1

**Washington County Percent Fawns  
All WMA's Combined 1996-2010**

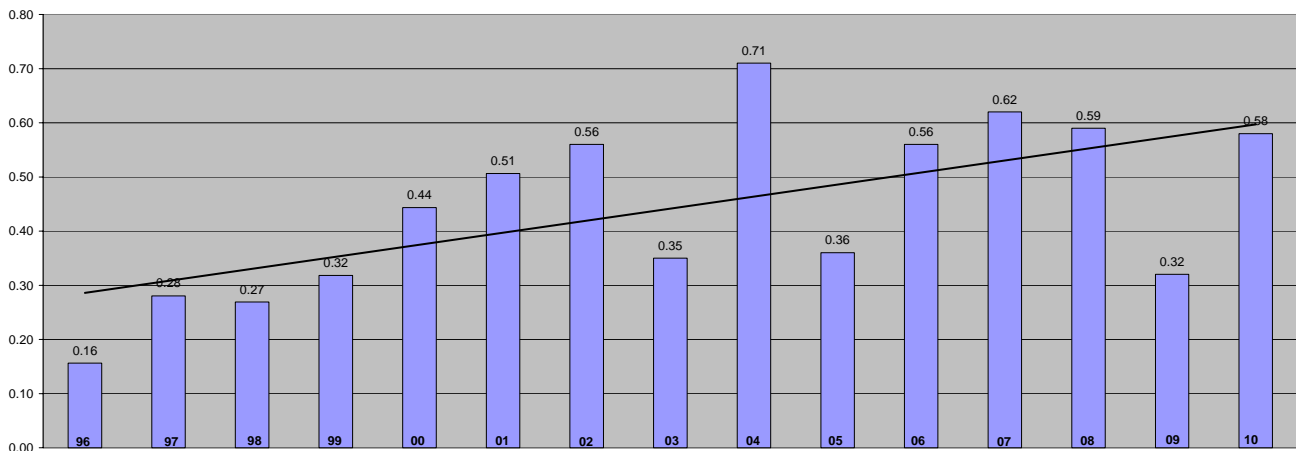


Chart 2

**WMA's 2010 PERCENT FAWN SURVIVAL RATE**

